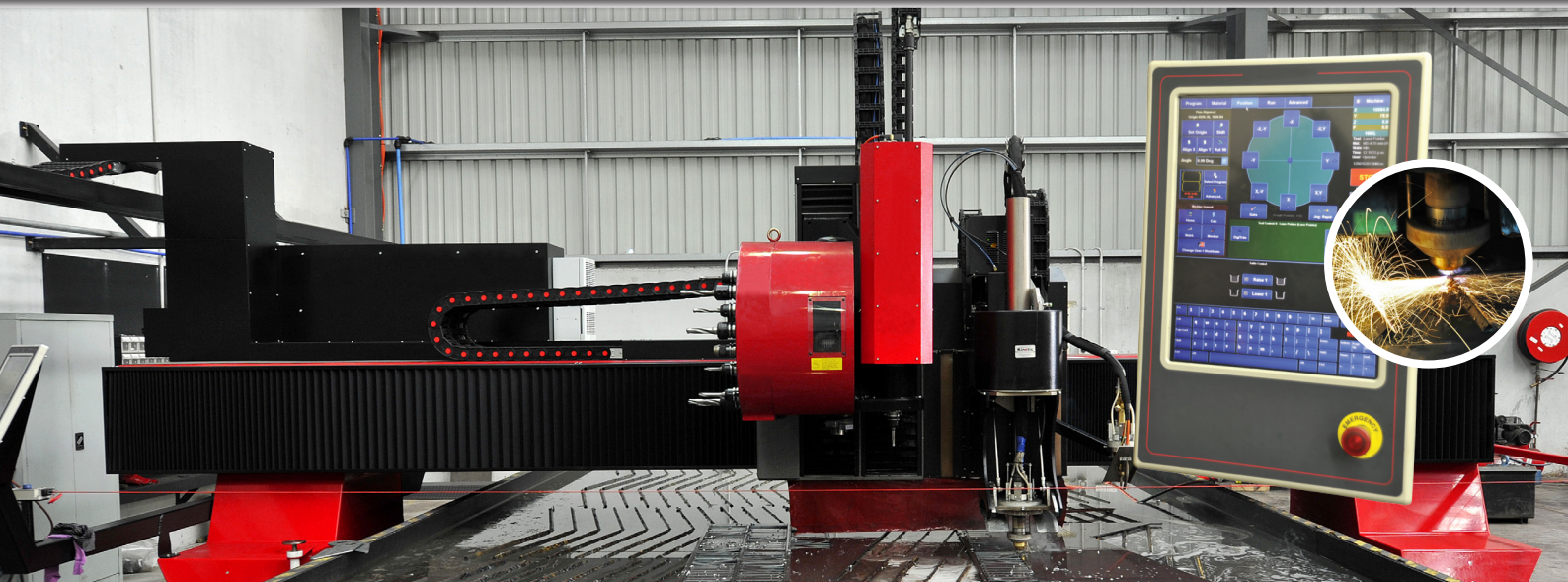




**ALLSTEEL
PROCESSING PTY LTD**
SPECIALISING IN STEEL FABRICATION

WWW.ALLSTEELPROCESSING.COM.AU



NEW PLASMA MACHINING CENTRE

In order to increase our Processing & Fabrication services, Allsteel Processing recently installed a State of the art **HI DEF PLASMA & MACHINING CENTRE**. This enables us to offer further assistance when it comes to Processing / Fabricating your steel needs.

Plasma Specs

- 3000 wide x 9600 long Cutting Bed
- PLASMA Up to 60mm (stainless)
- PLASMA Up to 80mm (mild steel)
- PLASMA Up to 80mm (aluminium)
- OXY 150mm +
- DRILLING (up to 50mm Dia)
- COUNTER BORING (up to 127mm Dia)
- BEVELLING
- DRILLING & TAPPING (up to 24mm Dia)



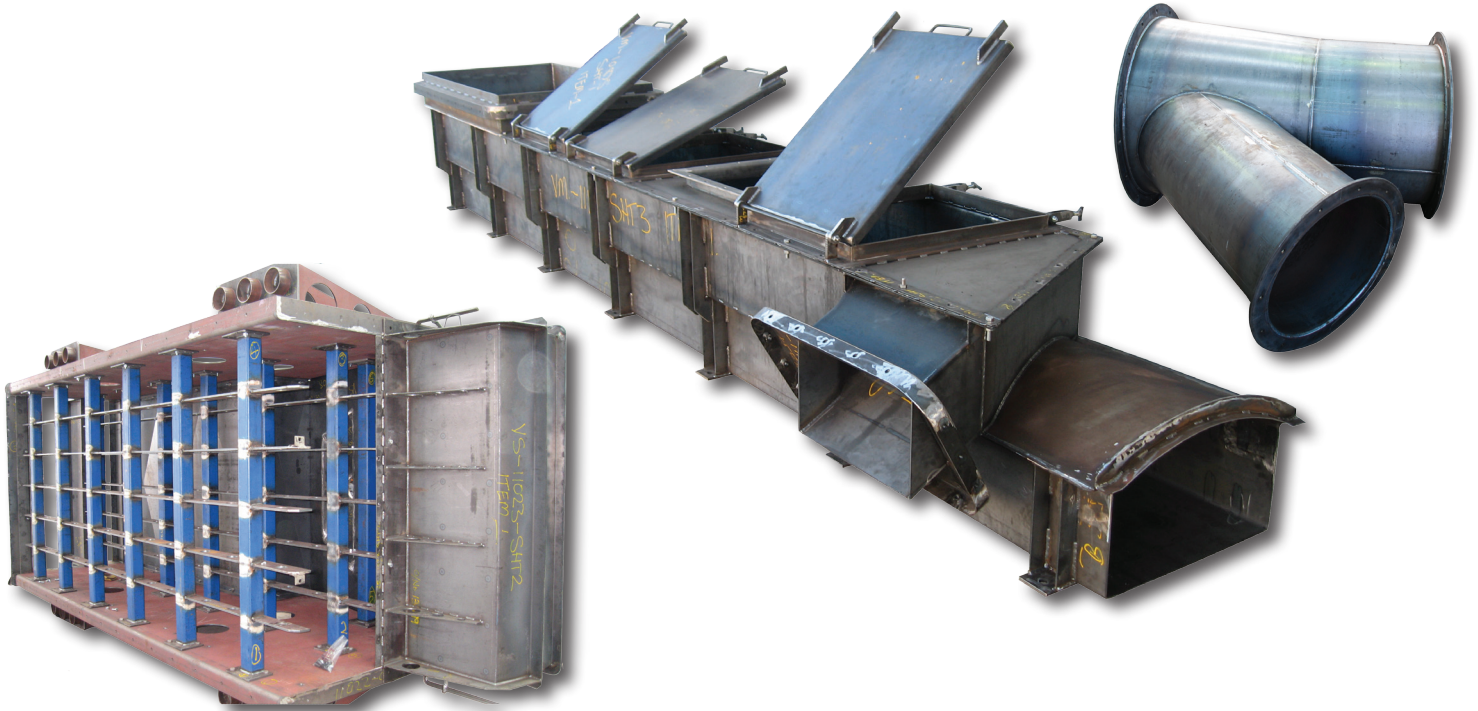
Fabrication

- Mining Equipment
- Tanks
- Platform Structures
- Hoppers and Feeders
- Transport Equipment
- Structural
- Structural Bases
- Heavy Ducting
- Stairs
- Material Handling Equipment

PH: (03) 9794 9522

www.allsteelprocessing.com.au

Call: (03) 9794 9522



Guillotining

- Up to 6mm thick x 4100 long
- Up to 10mm thick x 3000 long
(Refer to PLASMA outside of these capacities.)
- Small and Large Production Runs
- 24 Hour Leadtimes if required (subject to volume)
- Tolerances to +/- .5mm

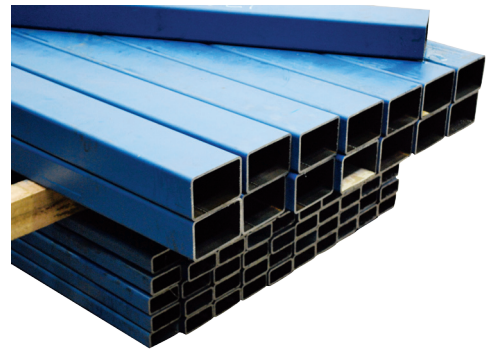
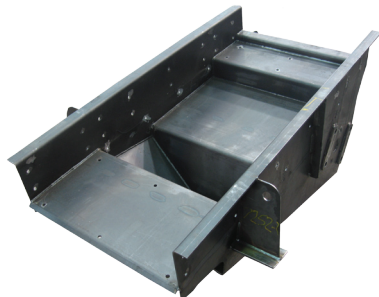


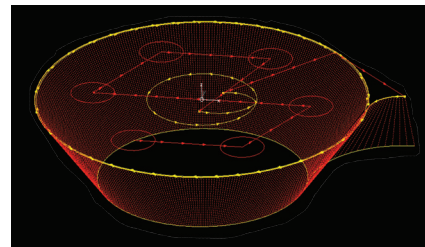
Plate Rolling, Drilling & Punching, Saw Cutting

- Angles & Flats
- RHS + SHS
- Square & Rounds
- Channels, UB's & UC's



Brake Press

- 250 Tonnes x 4300 long
- Consistent & accurate degree of forming
- Small and Large Production Runs



Design and Finishing Services

- C.A.D., FASTCAM, DEVELOPMENTS
- Galvanising
- Zinc Plating
- Powder Coating
- Painting

Please visit us at: www.allsteelprocessing.com.au
to see more detail of the full range of services offered.

9-11 Ordish Road, Dandenong South, Victoria 3175
Phone: (03) 9794 9522 Fax: (03) 9794 0798 Email: office@allsteelprocessing.com.au